

# String Quartet in C major ("Emperor")

Op. 76 No. 3

FRANZ JOSEPH HAYDN (1732-1809)

ALLEGRO.

Violoncello.

*f* *p* *f*

6

*fz* *fz* *fz*

12

*p*

18

*tr* *tr* *tr*  
*fz* *fz* *fz*

22

*ff* *fz* *fz* *f*

28

*fz* *ff*

32

*p* *f*

39

*tr* *tr* *tr*  
*f*

43 *tr.* 1. 2. *p* *p*

48 *f* *p* *f*

55 3

63 *p* *fz fz*

69 *fz fz* *sempre*

77 2 *p* *f* *p* *f*

85 *fz fz fz*

92

96 *fz fz*

101

107

*la seconda volta più piano*

113

119

124

POCO ADAGIO CANTABILE.

Violoncello.

7

14

Var. I

Var. II

Musical notation for the first system of Var. II, bass clef, common time, starting with a piano (*p*) dynamic.

47

Musical notation for the second system of Var. II, starting at measure 47.

54

Musical notation for the third system of Var. II, starting at measure 54, featuring fortissimo (*fz*) dynamics.

Var. III

Musical notation for the first system of Var. III, bass clef, common time, starting with a 7-measure rest.

74

Musical notation for the second system of Var. III, starting at measure 74.

Var. IV

Musical notation for the first system of Var. IV, bass clef, common time.

88

Musical notation for the second system of Var. IV, starting at measure 88, featuring a change to 3/8 time signature.

97

Musical notation for the third system of Var. IV, starting at measure 97, featuring piano-pianissimo (*pp*) dynamics.

MENUETTO.

Violoncello.

Musical notation for the beginning of the Menuetto, bass clef, 3/4 time, starting with a forte (*f*) dynamic.

10

30

39

48

Trio.

72

86

Menuetto D.C.

FINALE: PRESTO.

Violoncello.

9

*p* *f* *f*

16

*3*

26

*fz* *p*

36

*fz* *fz*

44

*f* *fz* *fz*

52

*2*

60

*f*

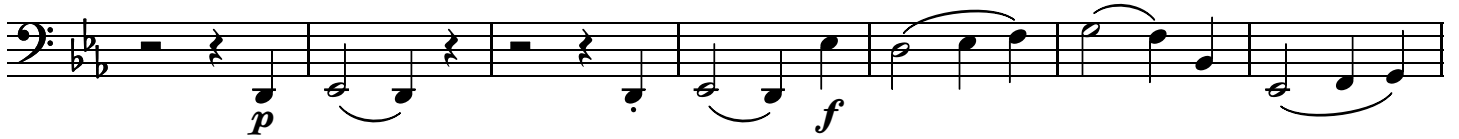
65

*1.* *2.*

74

*f*

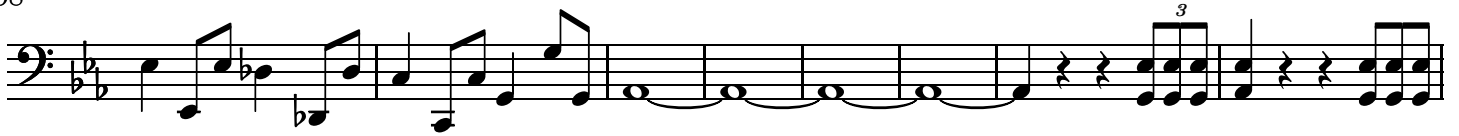
81



88



98



106



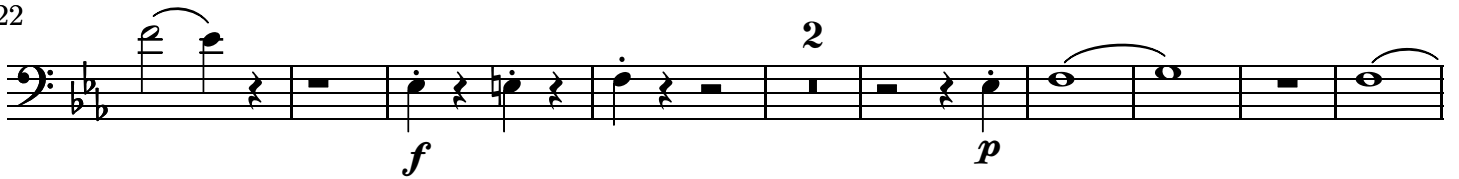
110



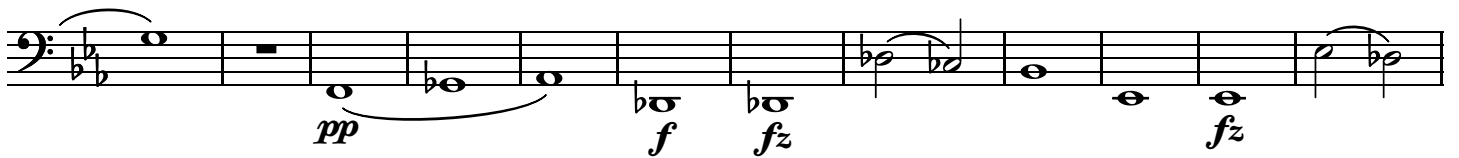
116



122



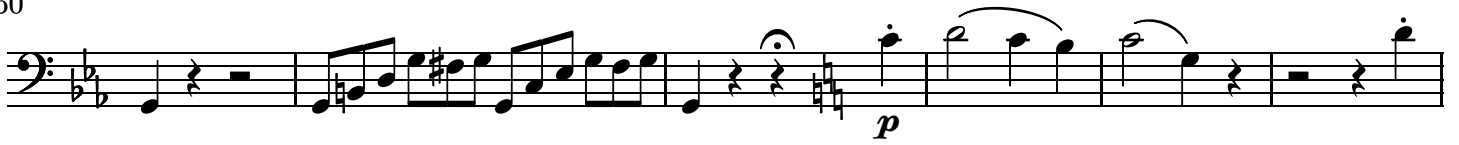
133



145



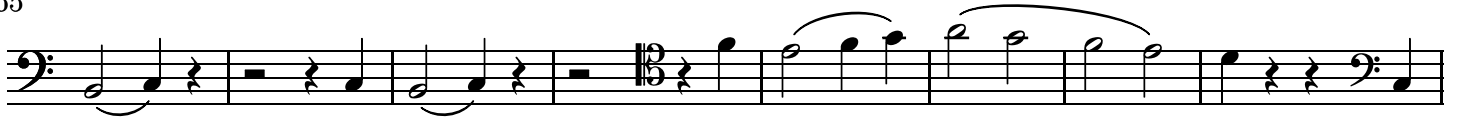
150



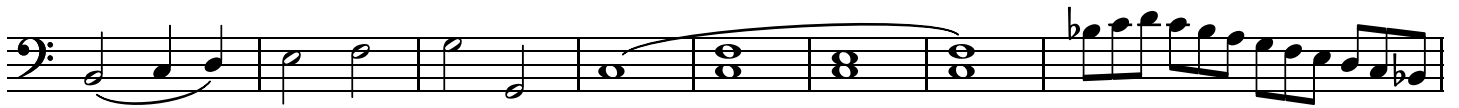
156



165



173



181



185

